

ZytoLight® SPEC MAML2 Dual Color Break Apart Probe



Background

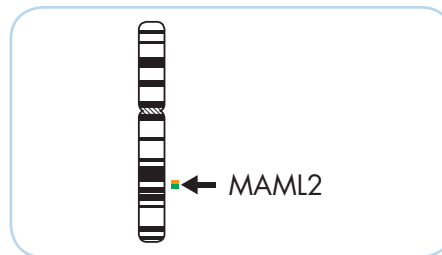
The ZytoLight® SPEC MAML2 Dual Color Break Apart Probe is designed to detect the translocation t(11;19)(q21;p13.1) specific for mucoepidermoid carcinomas. The mucoepidermoid carcinoma is the most common malignant tumor of the salivary gland. With about 30-50% of all cases, the translocation t(11;19)(q21;p13.1) is the most frequent chromosomal aberration in mucoepidermoid carcinomas. In some cases the t(11;19) is the sole chromosomal anomaly and in other cases the t(11;19) was found either as a more complex translocation involving other chromosomes or together with other abnormalities.

References

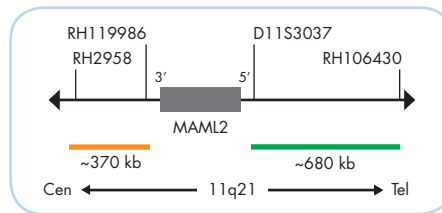
- Bishop JA, et al. (2014) *Head Neck Pathol* 8: 287-90.
- Camelo-Piragua SI, et al. (2009) *Hum Pathol* 40: 887-92.
- Chiosea SI, et al. (2012) *Laryngoscope* 122: 1690-4.
- El-Naggar A, et al. (1996) *Cancer Genet Cytogenet* 87: 29-33.
- Jee KJ, et al. (2013) *Mod Pathol* 26: 213-22.
- Lei Y & Chiosea SI (2012) *Head Neck Pathol* 6: 166-70.
- Noda H, et al. (2013) *Cancer Sci* 104: 85-92.
- Nordkvist A, et al. (1994) *Cancer Genet Cytogenet* 74: 77-83.
- Rotellini M, et al. (2012) *J Oral Pathol Med* 41: 615-20.
- Schwarz S, et al. (2011) *Histopathology* 58: 557-70.
- Schwarz S, et al. (2011) *Int J Clin Exp Pathol* 4: 336-48.
- Winnes M, et al. (2007) *Genes Chromosomes Cancer* 46: 559-63.
- Zhu F, et al. (2014) *PLoS One* 9: e94399.

Probe Description

The SPEC MAML2 Dual Color Break Apart Probe is a mixture of two direct labeled probes hybridizing to the 11q21 band. The green fluorochrome direct labeled probe hybridizes distal to the MAML2 gene, the orange fluorochrome direct labeled probe hybridizes proximal to that gene.



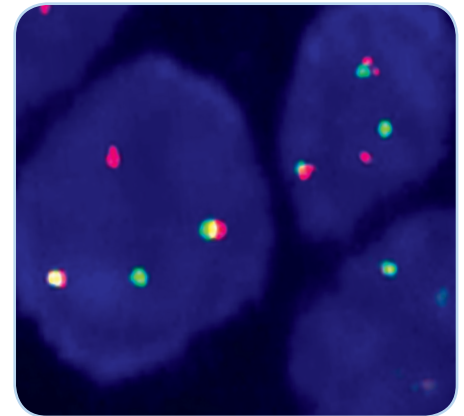
Ideogram of chromosome 11 indicating the hybridization locations.



SPEC MAML2 Probe map (not to scale).

Results

In an interphase nucleus lacking a translocation involving the 11q21 band two orange/green fusion signals are expected representing two normal (non-rearranged) 11q21 loci. A signal pattern consisting of one orange/green fusion signal, one orange signal, and a separate green signal indicates one normal 11q21 locus and one 11q21 locus affected by the translocation specific for mucoepidermoid carcinomas.



SPEC MAML2 Dual Color Break Apart Probe hybridized to abnormal nuclei containing two normal chromosomes 11 as indicated by two orange/green signal pairs and a derivative chromosome 11 with a translocation involving the 11q21 band as indicated by one orange and one separate green signal.

Prod. No.	Product	Label	Tests* (Volume)
Z-2014-50	ZytoLight SPEC MAML2 Dual Color Break Apart Probe	●/●	5 (50 µl)
Z-2014-200	ZytoLight SPEC MAML2 Dual Color Break Apart Probe	●/●	20 (200 µl)
Related Products			
Z-2028-5	ZytoLight FISH-Tissue Implementation Kit		5
Incl. Heat Pretreatment Solution Citric, 150 ml; Pepsin Solution, 1 ml; Wash Buffer SSC, 210 ml; 25x Wash Buffer A, 50 ml; DAPI/DuraTect-Solution, 0.2 ml			
Z-2028-20	ZytoLight FISH-Tissue Implementation Kit		20
Incl. Heat Pretreatment Solution Citric, 500 ml; Pepsin Solution, 4 ml; Wash Buffer SSC, 560 ml; 25x Wash Buffer A, 100 ml; DAPI/DuraTect-Solution, 0.8 ml			

* Using 10 µl probe solution per test. only available in certain countries. All other countries research use only! Please contact your local dealer for more information.